

Grace Lutheran Extended Care Hands On

Monday, August 27, 2012



Dates to Remember

Friday August 31: **NO SCHOOL or ECP**

Monday September 3: **NO SCHOOL or ECP**

Thursday October 11:
11:30 Early Release and no PM4K.
Baking Day at ECP.
More Information to come.

Friday October 12:
NO SCHOOL. ECP
Bowling Field Trip.
More Information to come.

Carol Bird, Director
Tammy Breckenfelder, Program Co-ordinator
Heidi Miller, Administrative Assistant

Welcome Back!!

Welcome to the new school year!! We are all excited about the new school year and to celebrate the 50th Anniversary of Grace Lutheran School.

We aim to provide a safe, secure and loving Christian environment for our students before and after school. During their time at ECP, students are subject to the same dress code, discipline and playground rules that apply during school hours. Please remind your child(ren) that school rules apply even after school.

Although we run a very flexible program, we do need to hear from you when your child(ren)'s ECP schedule changes. Please contact ECP **AND** the school office when your child will be coming to ECP on a day they are not scheduled or when you have signed your child up for ECP and then do not need ECP (for example, if your child will be going to the blue line). We are too often faced with situations in which the teacher, student and ECP staff have conflicting communications as to where a child should be. These situations are unduly trying for everyone, including the child(ren). Please help us avoid these situations and help keep your children safe by communicating schedule changes with us.

ECP is a prepaid program. ECP time must be purchased in 10 hour

increments. Time should be purchased prior to your child(ren) attending ECP. Your child(ren) are signed in on the "sign in sheet" when they arrive at ECP and are signed out on the same "sign in sheet" when they leave ECP. The time they spend at ECP is calculated to the ½ hour and then deducted from the time on your account. A statement showing time purchased, time used each day and remaining time will be sent out or emailed each Monday. Please ensure you have sufficient time on your account prior to sending your child(ren) to ECP.

Please do not hesitate to contact me or any of the ECP staff with any questions, concerns or feedback.

Carol Bird, ECP Director
(262)251-0670
cbird@grace-connect.org

Tammy Breckenfelder,
Program Co-ordinator
(262)251-7140 ext 110
graceextendedcare@gmail.com

Heidi Miller,
Administrative Assistant
(262)251-7140 ext 110
graceextendedcare@gmail.com

Grace ECP Staff

Since many of you may not get a chance to meet all of us, following is a brief summary of the ECP staff. This year we welcome Mrs. Katrina Ludin to ECP and say goodbye to Mrs. Vicki Busalacchi.

Carol Bird

Program Director

Mrs. Carol Bird established the Grace ECP program in 2001 and also serves as the Grace Business Manager since 2010.



Tammy Breckenfelder Program Co-ordinator

Mrs. Breckenfelder has two children at Grace.



Heidi Miller

Administrative Assistant

Mrs. Miller has been with ECP since 2005 and has four children at Grace.



Donna "Mrs. W." Wiersma

Monday - Wednesday before school 3K and 4K is run by Mrs. W who has been at ECP for 10 years.



Katrina Ludin

Please welcome Mrs. Katrina Ludin to the ECP Staff. She will be working the before school 3K and 4K program on Thursdays and Fridays.



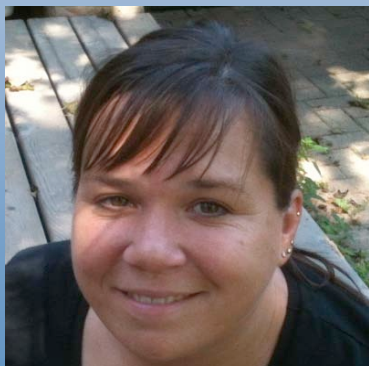
Sandy Vesche

Mrs. Vesche has two children at Grace.



Kim Stiller

Mrs. Stiller is a teacher aide for 3K and has been at ECP for over 4 years. Mrs. Stiller has 2 children at Grace and child in high school.



Hannah Hinze

Miss Hannah has been with ECP for 5 years, is a Grace alumni and is studying at Concordia College.



Gretchen Mauritz

Mrs. Mauritz has been a teacher aide for 1st and 2nd grade at Grace for 14 years and has been at ECP for 7 years.

